

# Tumble Dryers

25-200 Pound Capacity



Please refer to your Installation/Operation/Maintenance manual for detailed maintenance procedures.

— Preventative Maintenance —



# Table of Contents

Daily.....	2
Monthly.....	3
Quarterly.....	5
Bi-Annually.....	9
Annually.....	12
Daily Preventative Maintenance Checklist.....	13
Monthly Preventative Maintenance Checklist.....	13
Quarterly Preventative Maintenance Checklist.....	14
Bi-Annually Preventative Maintenance Checklist.....	14
Annually Preventative Maintenance Checklist.....	15

**IMPORTANT: Replace all panels that are removed to perform maintenance procedures. Do not operate the tumble dryer with missing guards or with broken or missing parts. Do not bypass any safety devices.**

# Daily

1. Inspect the area surrounding tumble dryers, remove all combustible materials, including lint, before operating the machines.

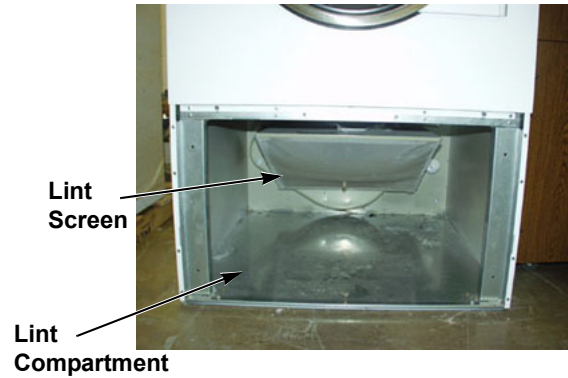


TMB2F

2. Check cylinder for foreign objects to avoid damage to clothing and equipment.

3. Clean lint from lint compartment and screen(s) to maintain proper airflow and avoid overheating.

## Single Tumble Dryers



## Stack Tumble Dryers

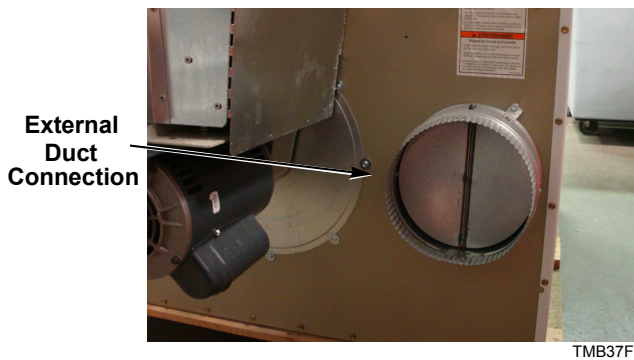


4. At end of day, clean the machine's exposed panels with mild detergent, if needed. Rinse with clean water. DO NOT use products that contain alcohol on the control panel.

# Monthly

1. Remove lint and debris from inside exhaust duct to maintain proper airflow and avoid overheating.
  - a. Remove external duct and duct access covers, if present.
  - b. Clean inside of duct with a vacuum.
  - c. Clean dampers and make sure they operate freely.
  - d. Replace duct and all access covers before returning tumble dryer to operation.

## 25, 30, 35, 50, 55 and 75 Pound Tumble Dryers

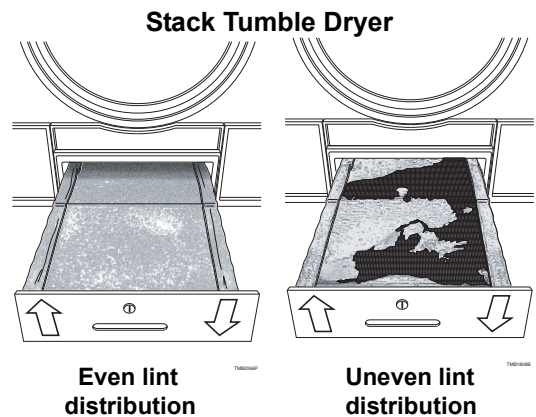
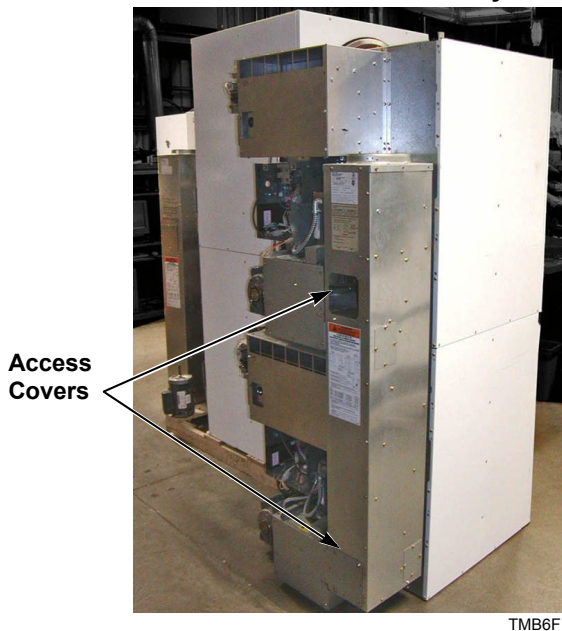


## 120, 170 and 200 Pound Tumble Dryers



2. Ensure even lint distribution over lint screen, replace if distribution of lint is uneven to maintain proper airflow and avoid overheating.

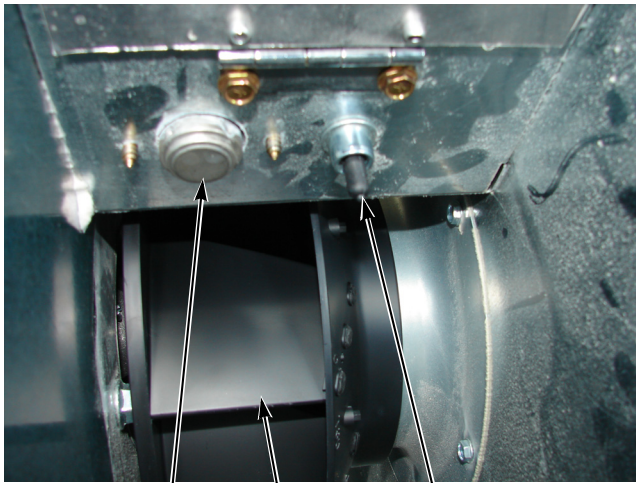
## 30 and 45 Pound Stack Tumble Dryers



**Monthly**

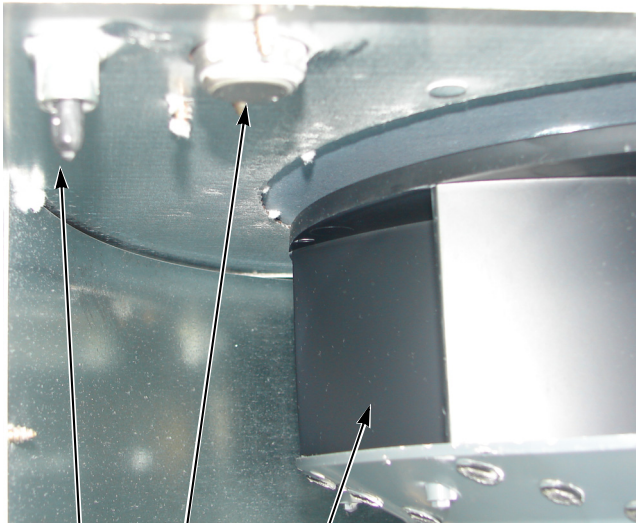
- 3. Carefully wipe any accumulated lint off the cabinet high limit thermostat and thermistor, including perforated cover. Lint buildup will act as an insulator, causing machine to overheat.
- 4. Clean lint and debris buildup from blower to maintain proper airflow, avoid overheating and prevent possible vibration.

**25, 30, 35 and 55 Pound Tumble Dryers**



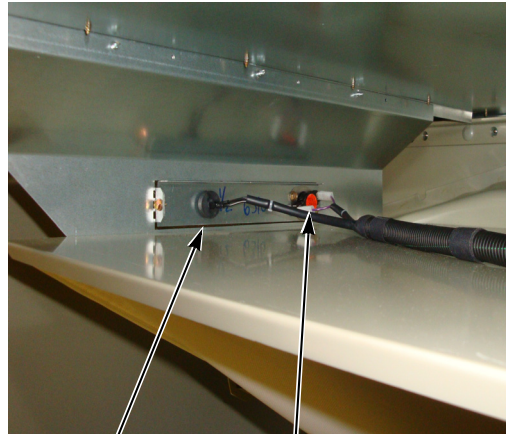
Thermostat      Blower      Thermistor

**Stack 30 and 45 Pound Tumble Dryers**



Thermistor      Blower  
Thermostat

**50 and 75 Pound Tumble Dryers**



Thermistor      Thermostat

TMB38F

**120, 170 and 200 Pound Tumble Dryers**



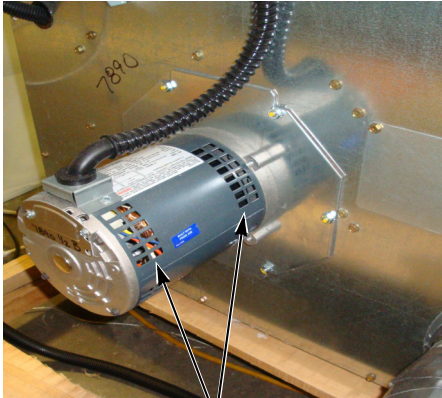
Thermistor

TMB39F

# Quarterly

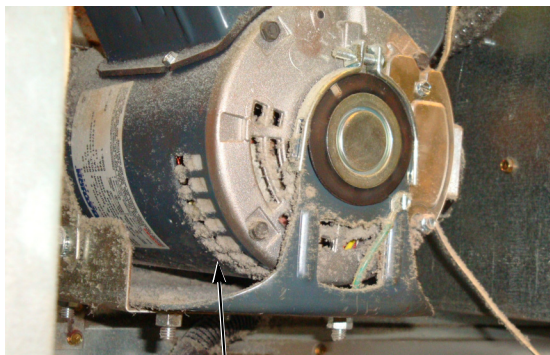
1. Use a vacuum to clean air vents on drive motors.

**Single Tumble Dryer Fan Motor**

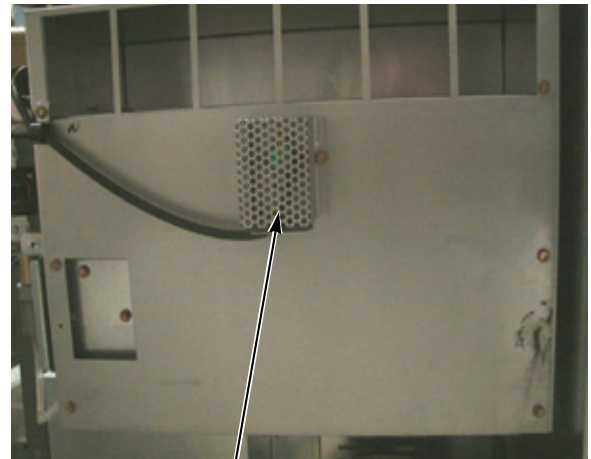


**Vents**

**Stack Tumble Dryer Drive Motor**



**Vent**

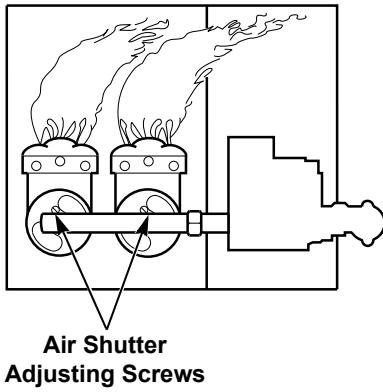


**Thermostat  
Cover**

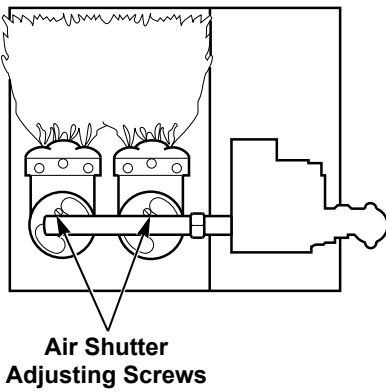
2. **25, 30, 35, 55, T30 and T45 Models:** Use a vacuum to clean lint from rear limit thermostat cover.

3. Check and clean steam coils, if applicable.
4. Check flow of combustion and ventilation air. Air Shutter Adjusting Screws on 50, 75, 120, 170 and 200 pound machines can be used to obtain proper flame intensity.

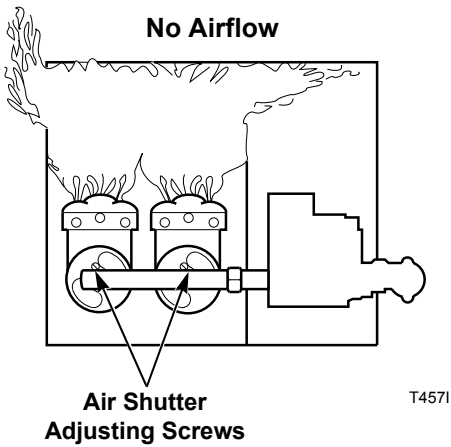
**Proper Airflow**



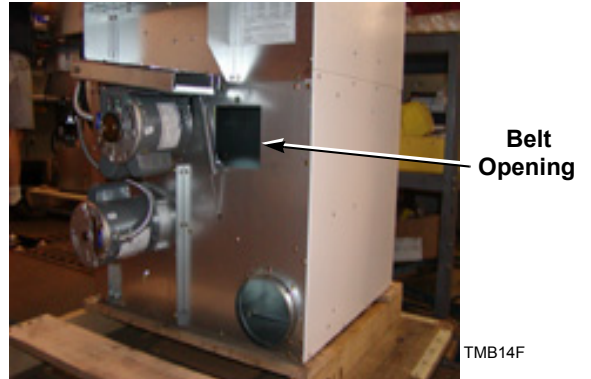
**Insufficient Airflow**



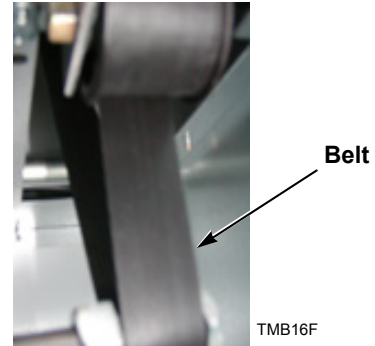
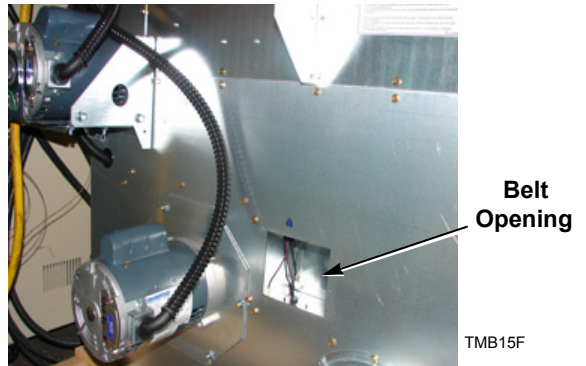
**No Airflow**



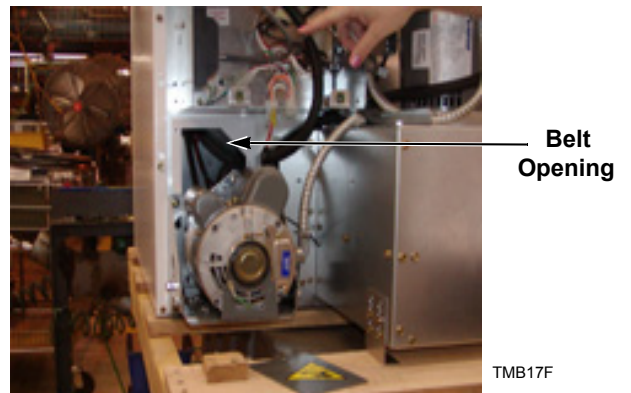
**25, 30 and 35 Pound Tumble Dryers  
Prior to February 2006**



**25, 30, 35 and 55 Pound Tumble Dryers  
After February 2006**



**Stack 30 and 45 Pound Tumble Dryers**



- 5. Check belt tension and condition. Replace worn or cracked belts.



**Stack 30 and 45 Pound Tumble Dryers (cont.)**

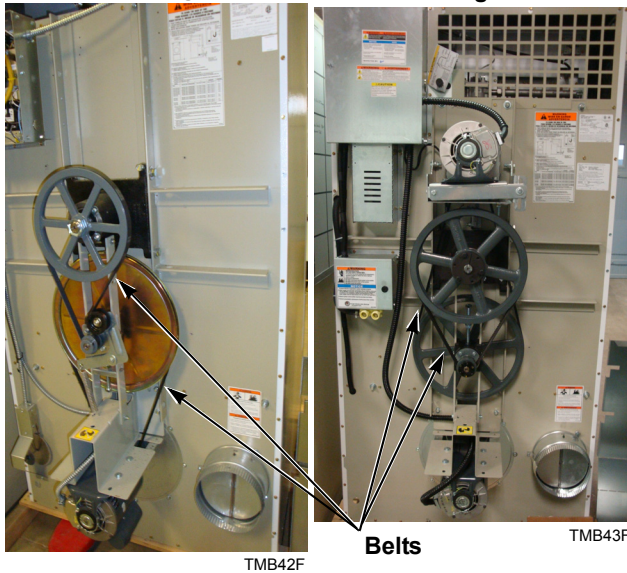


6. Clean the machine's top panel with mild detergent. Rinse with clean water.
7. **Models equipped with a fire suppression system:** Perform the fire suppression system maintenance test by pressing the test button in the control box. Refer to *Maintenance Section* in the *Installation/Operation/Maintenance Manual* for full instructions.

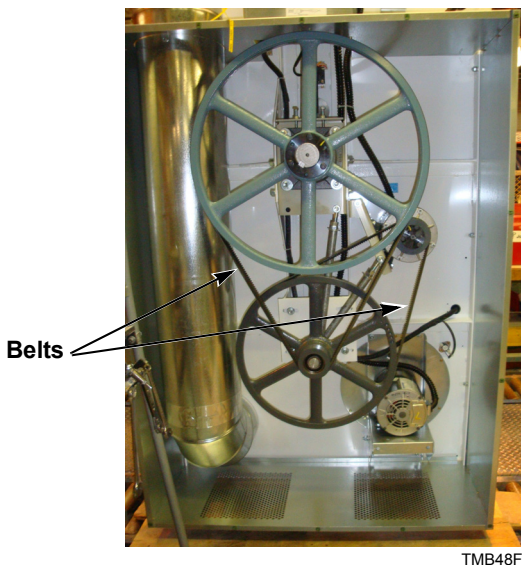
**50 and 75 Pound Tumble Dryers**

**Nonreversing Models**

**Reversing Models**



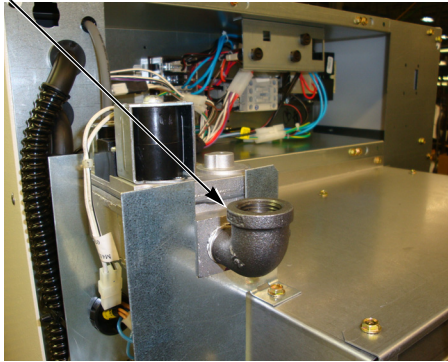
**120, 170 and 200 Pound Tumble Dryers**



# Bi-Annually

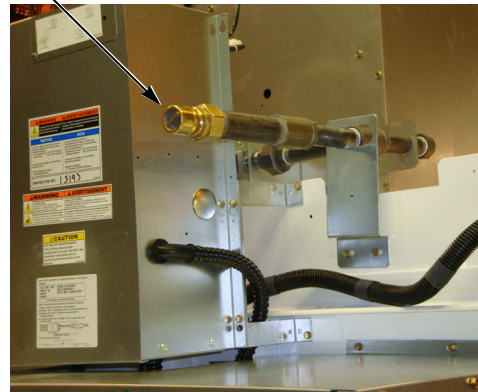
1. Check mounting hardware for any loose nuts, bolts or screws.
2. Check gas connections for leakage.

## 25, 30, 35 and 55 Pound Gas Connection



TMB49F

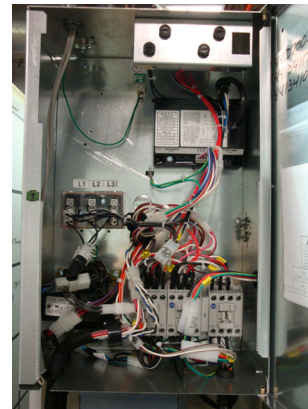
## 120, 170 and 200 Pound Gas Connection



TMB46F

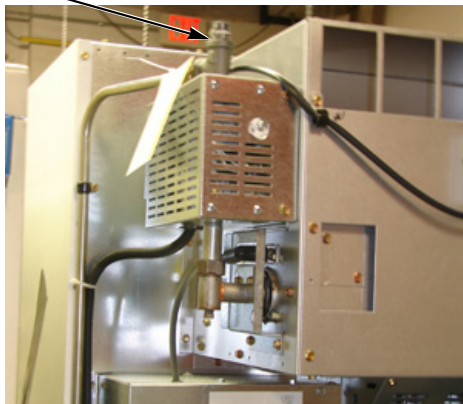
3. Check for loose electrical connections.

## Contactor Box with Electrical Connections



TMB47F

## Stack 30 and 45 Pound Gas Connection



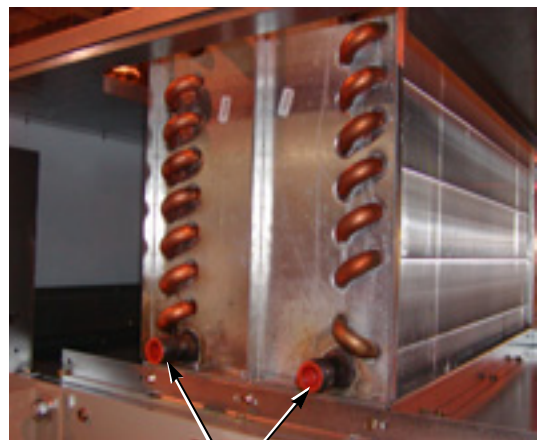
TMB22F

4. Check steam connections for looseness and leakage.

## 50 and 75 Pound Gas Connection



TMB45F

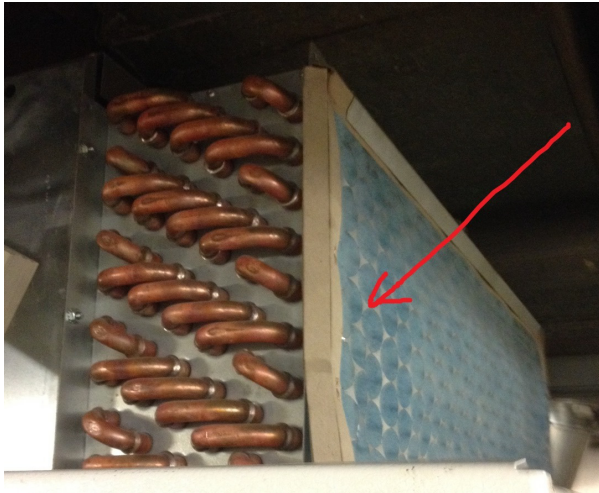


TMB25F

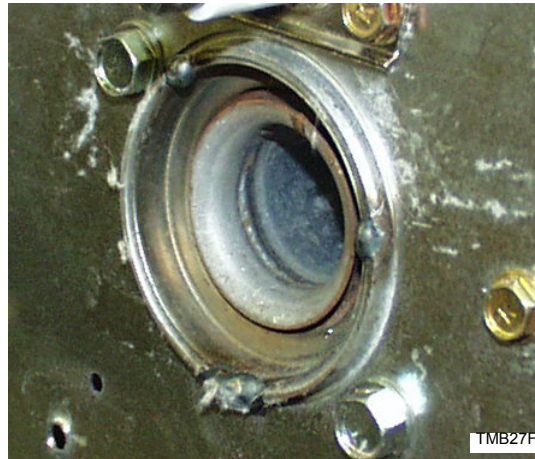
## Steam Connections

5. Check steam filter. Replace if dirty.

**NOTE: CE models use an aluminum filter. All other models use a fiberglass filter.**



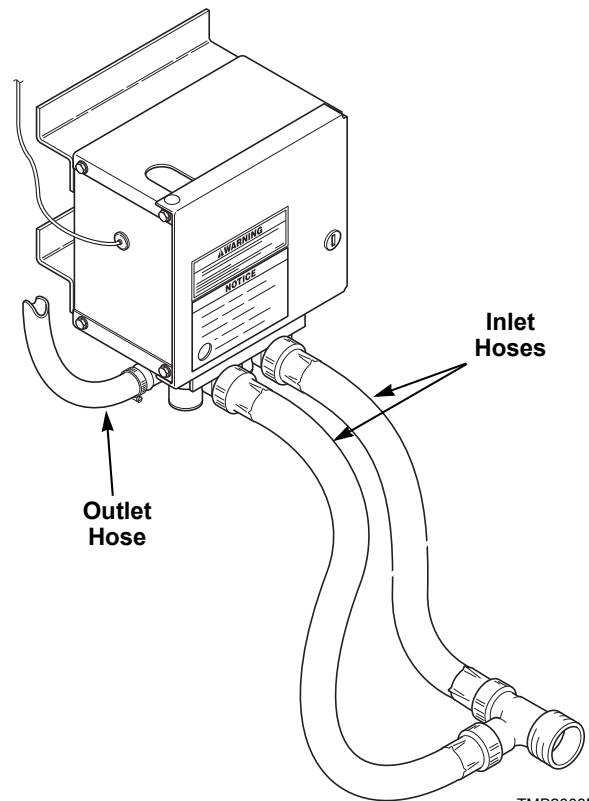
**Burner Tube without Lint Buildup**



- 6. Remove all front panels and vacuum, including coin drop mechanisms.
- 7. Check cylinder and front panel seals.
- 8. Inspect cabinet and inner panels for any damage, replace or repair as needed.
- 9. Clean burner tubes and orifice area of any lint buildup.

10. **Machines equipped with a fire suppression system:** All inlet and outlet hoses should be checked for any visible signs of deterioration. Replace as necessary or every five years.

**Burner Tube with Lint Buildup**

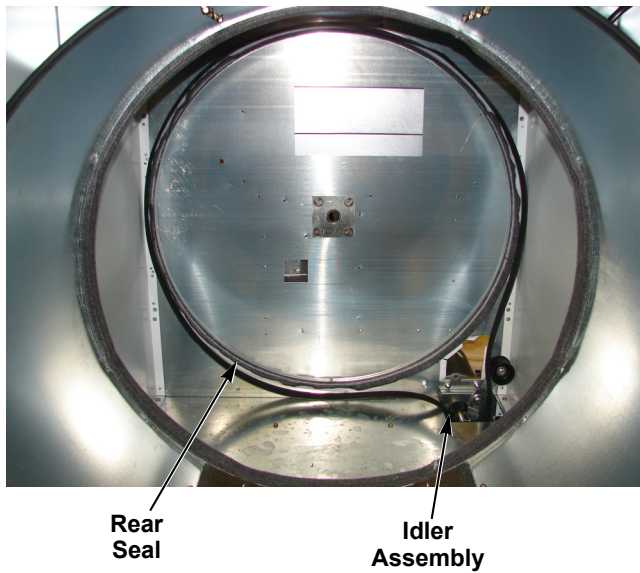


11. **Machines equipped with a heat exchanger kit:** Clean the inlet and outlet with a soft brush or clean by using hot water and, if needed, a mild detergent.

# Annually

## 25, 30, 35, 55, T30 and T45 Models:

1. Remove cylinder. Use a vacuum to clean lint from area around rear seal and idler assembly. Check seal and idler assembly for wear.



## All Models:

2. Remove burner tubes and clean using water and a brush.



# Daily Preventative Maintenance Checklist

Machine:	Week of:						
Operator:	Days						
Checks	1	2	3	4	5	6	7
Observe All Safety Warnings!							
1. Inspect the area surrounding tumble dryers, remove all combustible materials, including lint, before operating the machine.							
2. Check cylinder for foreign objects to avoid damage to clothing and equipment.							
3. Clean lint from lint compartment and screen to maintain proper airflow and avoid overheating.							
4. At end of day, clean the machine's exposed panels with mild detergent, if needed. Rinse with clean water. DO NOT use products that contain alcohol on the control panel.							

# Monthly Preventative Maintenance Checklist

Machine:	Month:						
Operator:							
Checks							
Observe All Safety Warnings!							
1. Remove lint and debris from inside exhaust duct to maintain proper airflow and avoid overheating.							
a. Remove external duct and duct access covers, if present.							
b. Clean inside of duct with a vacuum.							
c. Clean dampers and make sure they operate freely.							
d. Replace duct and all access covers before returning tumble dryer to operation.							
2. Ensure even lint distribution over lint screen, replace if distribution of lint is uneven to maintain proper airflow and avoid overheating.							
3. Carefully wipe any accumulated lint off the cabinet high limit thermostat and thermistor, including perforated cover. Lint buildup will act as an insulator, causing machine to overheat.							
4. Clean lint and debris buildup from blower to maintain proper airflow, avoid overheating and prevent possible vibration.							

Laminate this checklist so that it can be re-used.

## Quarterly Preventative Maintenance Checklist

Machine:	Quarter:			
Operator:				
Checks				
Observe All Safety Warnings!				
1. Use a vacuum to clean air vents on drive motors.				
2. <b>25, 30, 35, 55, T30 and T45 Models:</b> Use a vacuum to clean lint from rear limit thermostat cover.				
3. Check and clean steam coils, if applicable.				
4. Check flow of combustion and ventilation air.				
5. Check belt tension and condition. Replace worn or cracked belts.				
6. Clean the machine's top panel with mild detergent. Rinse with clean water.				
7. <b>Models equipped with a fire suppression system:</b> Perform the fire suppression system maintenance test by pressing the test button in the control box. Refer to <i>Maintenance Section</i> in the <i>Installation/Operation/Maintenance Manual</i> for full instructions.				

## Bi-Annually Preventative Maintenance Checklist

Machine:	Year:							
Operator:								
Checks								
Observe All Safety Warnings!								
1. Check mounting hardware for any loose nuts, bolts or screws.								
2. Check gas connections for leakage.								
3. Check for loose electrical connections.								
4. Check steam connections for looseness and leakage.								
5. Check steam filter. Replace if dirty.								
6. Remove all front panels and vacuum, including coin drop mechanisms.								
7. Check cylinder and front panel seals.								
8. Inspect cabinet and inner panels for any damage, replace or repair.								
9. Clean burner tubes and orifice area of any lint build up.								
10. <b>Fire suppression system machines:</b> Check all inlet and outlet hoses for any visible signs of deterioration.								
11. <b>Machines equipped with a heat exchanger kit:</b> Clean the inlet and outlet with a soft brush or clean by using hot water and, if needed, a mild detergent.								

Laminate this checklist so that it can be re-used.

# Annually Preventative Maintenance Checklist

Machine:	Year:							
Operator:								
Checks								
Observe All Safety Warnings!								
1. <b>25, 30, 35, 55, T30 and T45 Models:</b> Remove cylinder. Use a vacuum to clean lint from area around rear seal and idler assembly. Check seal and idler assembly for wear.								
2. <b>All Models:</b> Remove burner tubes and clean using water and a brush.								

Laminate this checklist so that it can be re-used.

